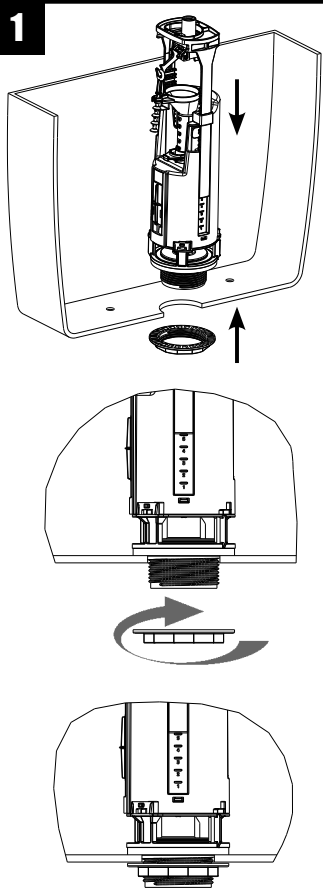
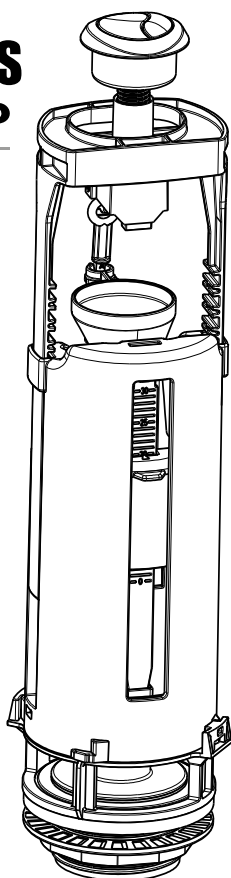
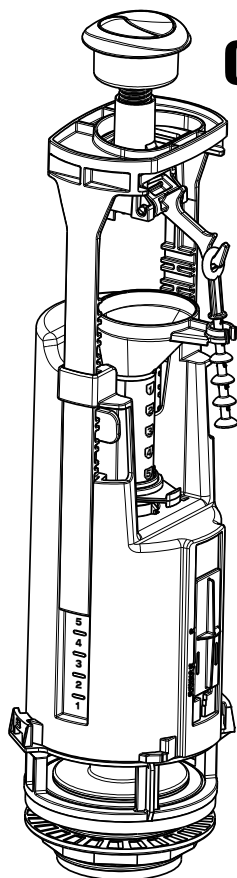


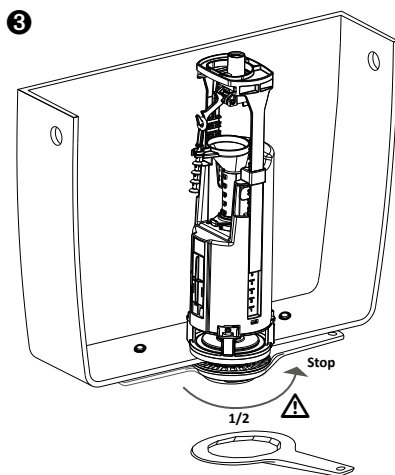
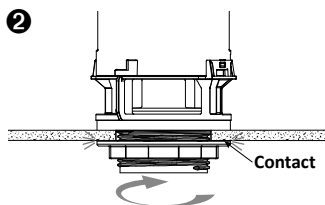
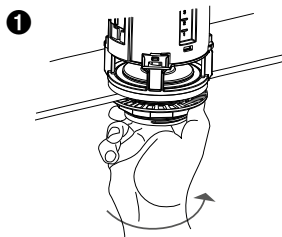
Réf. 50 6736 00

OPTIMA S SIAMP

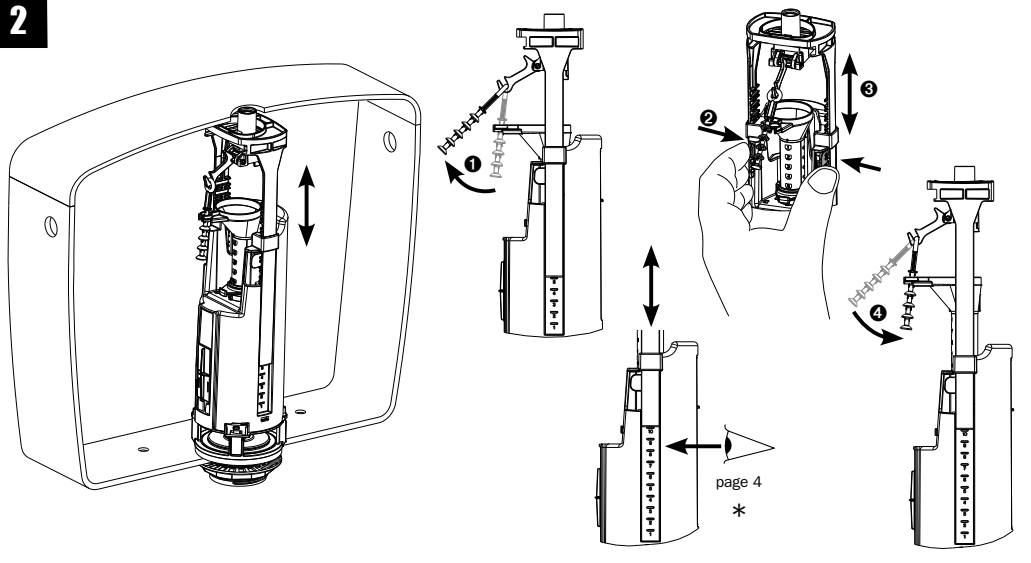
Monaco



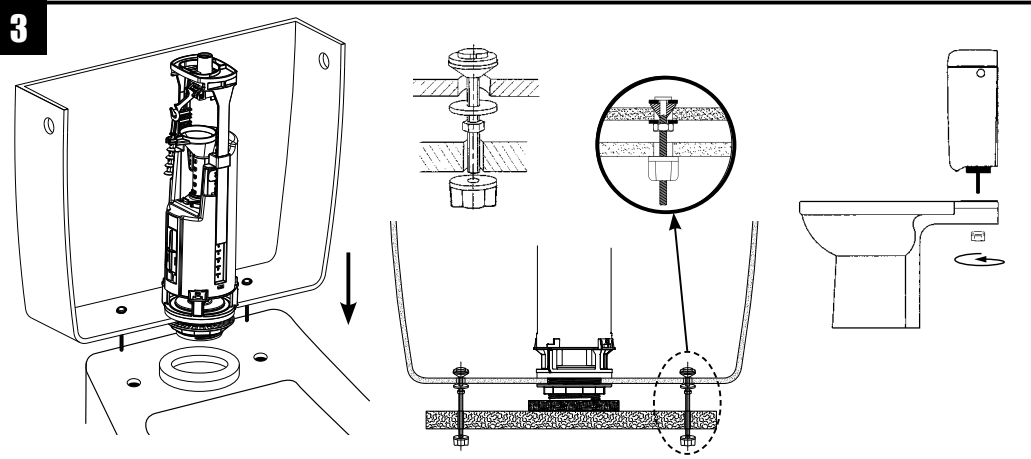
**ATTENTION - NE PAS TROP SERRER
DO NOT OVERTIGHT**



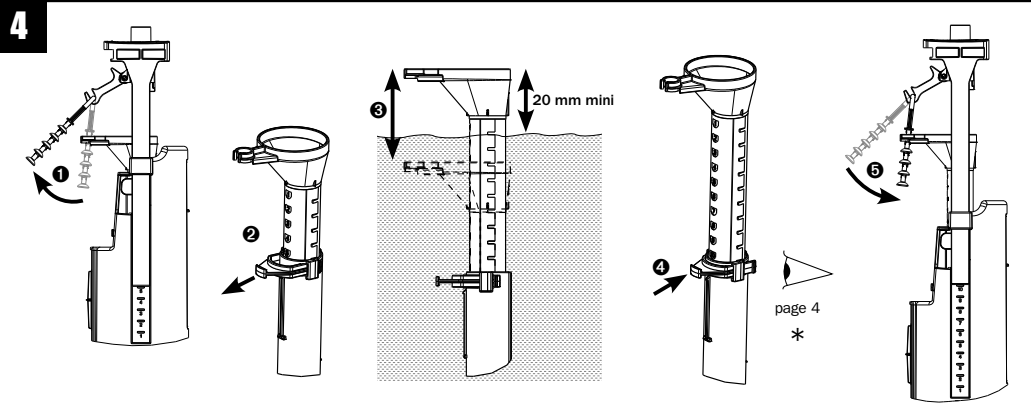
2



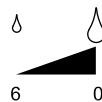
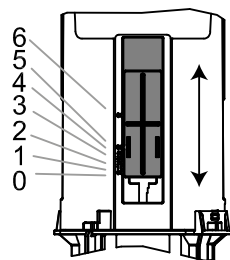
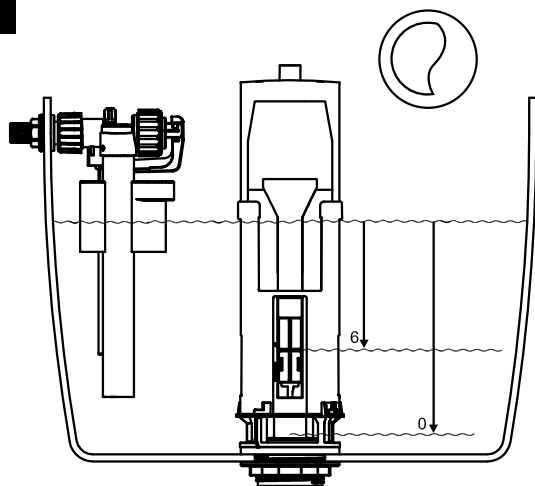
3



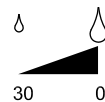
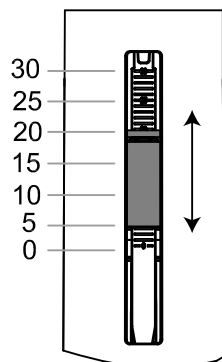
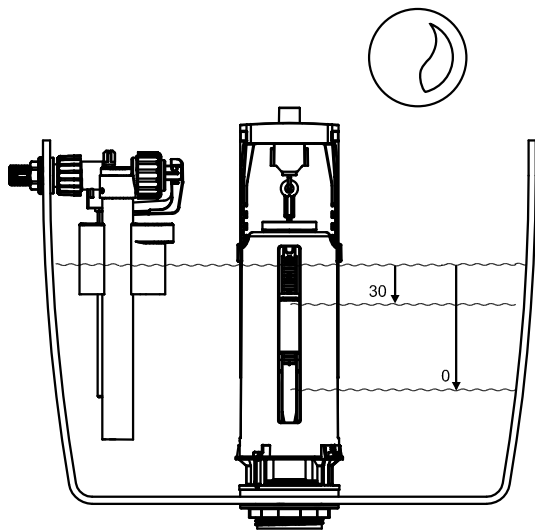
4



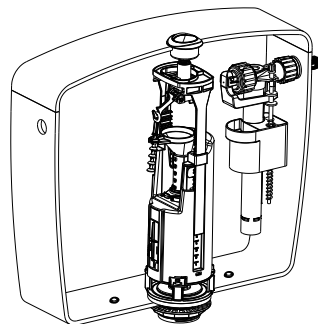
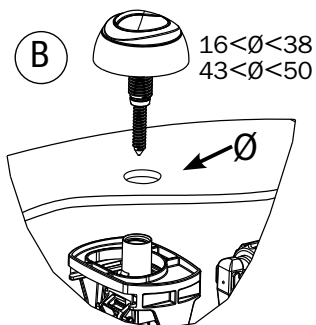
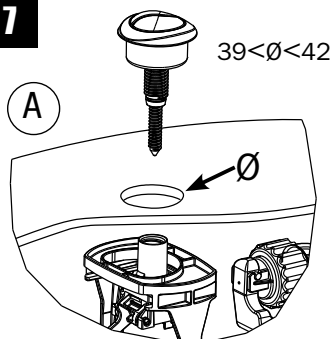
5

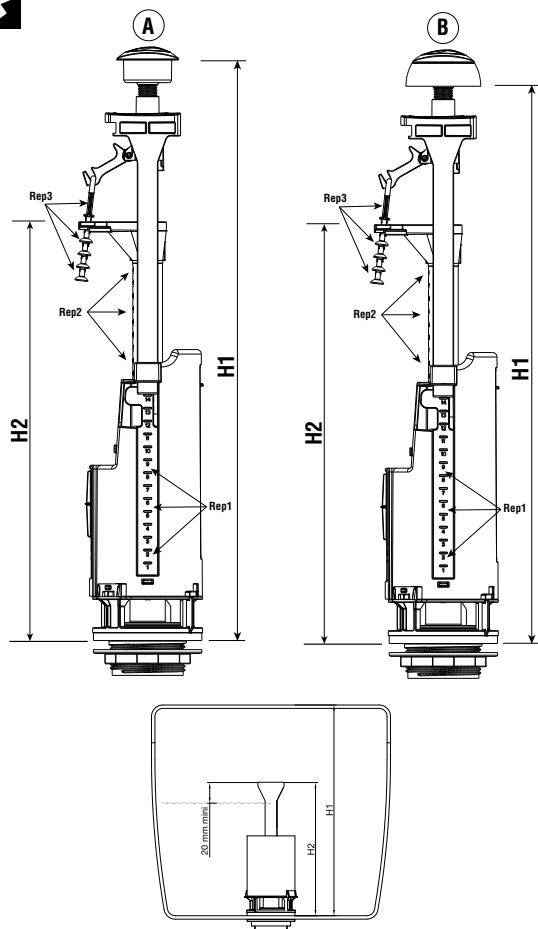
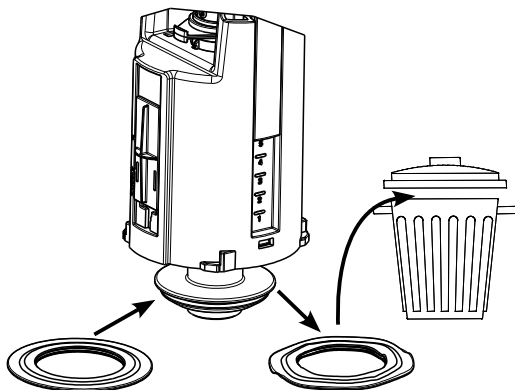
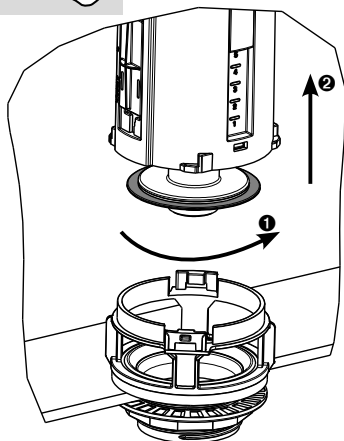


6



7



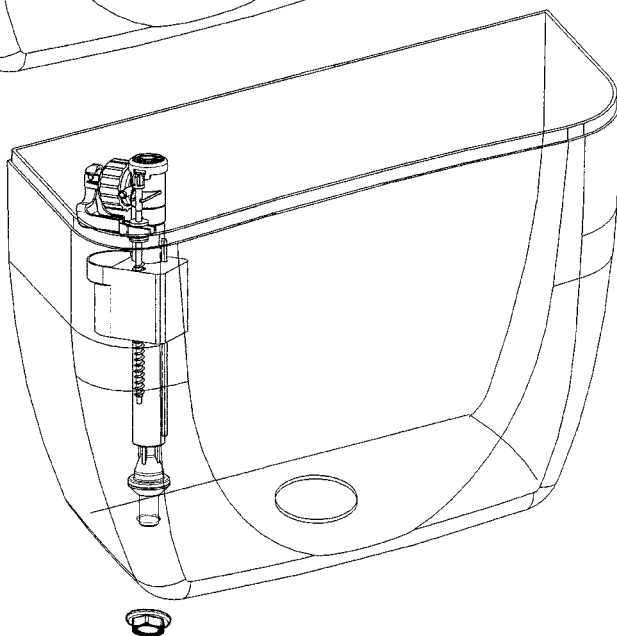
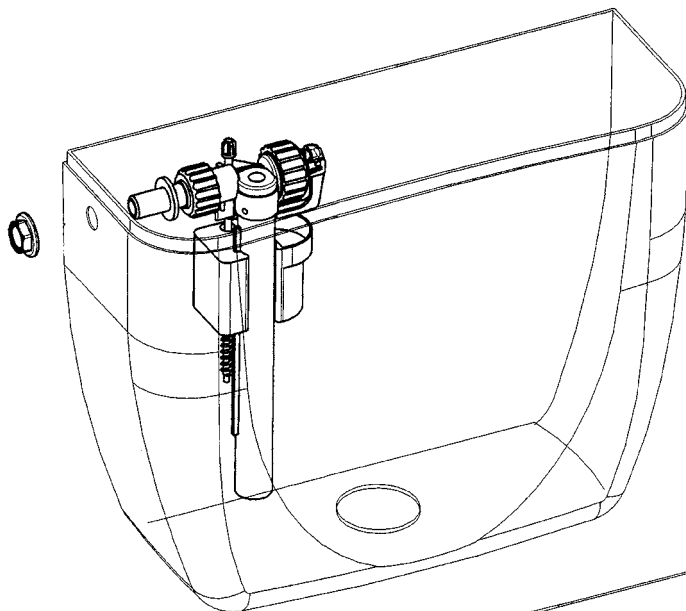


H 1		Rep 1	Rep 2	H2	Rep 3
A	B				
450 mm +/- 7	432 mm +/- 7	14	14	325	A
			13	315	B
			12	305	C
			11	295	D
			10	285	E
440 mm +/- 7	422 mm +/- 7	13	13	315	A
			12	305	B
			11	295	C
			10	285	D
			9	275	E
430 mm +/- 7	412 mm +/- 7	12	12	305	A
			11	295	B
			10	285	C
			9	275	D
			8	265	E
420 mm +/- 7	402 mm +/- 7	11	11	295	A
			10	285	B
			9	275	C
			8	265	D
			7	255	E
410 mm +/- 7	392 mm +/- 7	10	10	285	A
			9	275	B
			8	265	C
			7	255	D
			6	245	E
400 mm +/- 7	382 mm +/- 7	9	9	275	A
			8	265	B
			7	255	C
			6	245	D
			5	235	E
390 mm +/- 7	372 mm +/- 7	8	8	265	A
			7	255	B
			6	245	C
			5	235	D
			4	225	E
380 mm +/- 7	362 mm +/- 7	7	7	255	A
			6	245	B
			5	235	C
			4	225	D
			3	215	E
370 mm +/- 7	352 mm +/- 7	6	6	245	A
			5	235	B
			4	225	C
			3	215	D
			2	205	E
360 mm +/- 7	342 mm +/- 7	5	5	235	A
			4	225	B
			3	215	C
			2	205	D
			1	195	E
350 mm +/- 7	332 mm +/- 7	4	4	225	A
			3	215	B
			2	205	C
			1	195	D
			0	185	E
340 mm +/- 7	322 mm +/- 7	3	3	215	A
			2	205	B
			1	195	C
			0	190	D
			2	205	A
330 mm +/- 7	312 mm +/- 7	2	1	195	B
			0	185	C
			1	195	A
			0	185	B
			0	185	A
320 mm +/- 7	302 mm +/- 7	1	0	185	B
310 mm +/- 7/10	292 mm +/- 7/10	0	0	185	A

SIAMP

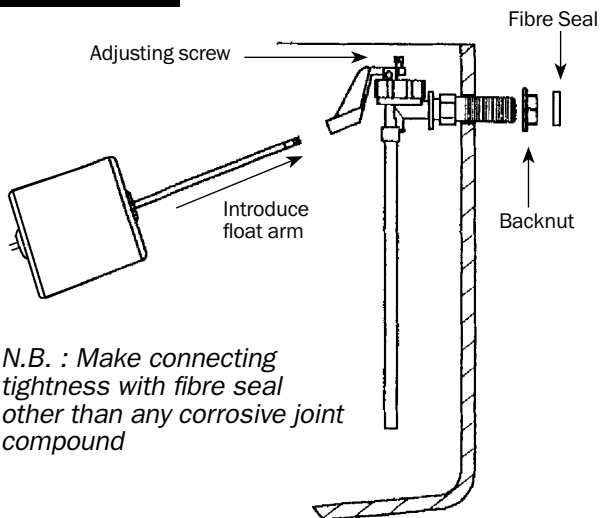
Monaco

INLET VALVES ASSEMBLY INSTRUCTIONS

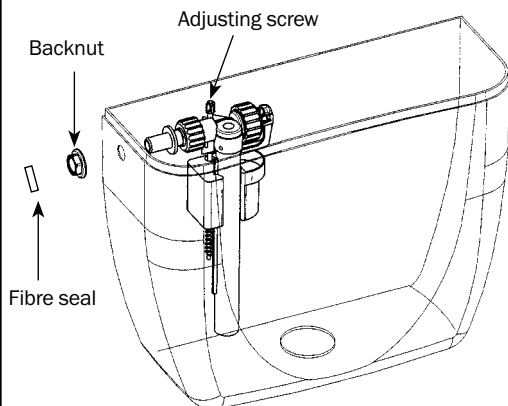


ROBECO 06 and STANDARD 15 EL

- ❶ Place inlet valve through inlet hole
- ❷ Secure with backnut
- ❸ Connect the supply
- ❹ Adjust water level with adjusting screw.



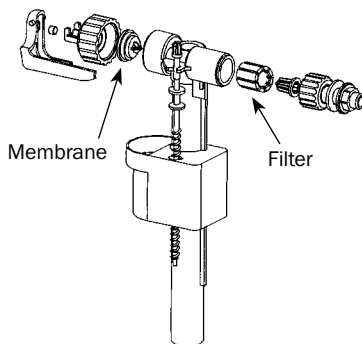
COMPACT 95L/93L



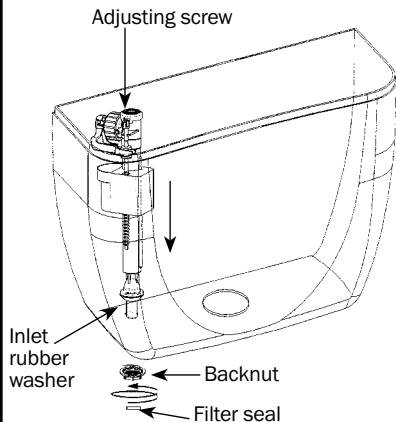
- ❶ Place inlet valve through inlet hole
- ❷ Secure with backnut
- ❸ Connect the supply
- ❹ Adjust water level with grey adjusting screw.

N.B. : Make connecting tightness with fibre seal other than any corrosive joint compound

MAINTENANCE 95L



COMPACT 99B



- ❶ Place inlet valve through inlet hole with inlet rubber washer inside the cistern
- ❷ Secure with backnut
- ❸ Connect the supply
- ❹ Adjust water level with grey adjusting screw.

N.B. Ensure tightness of connection to cistern with filter gasket.

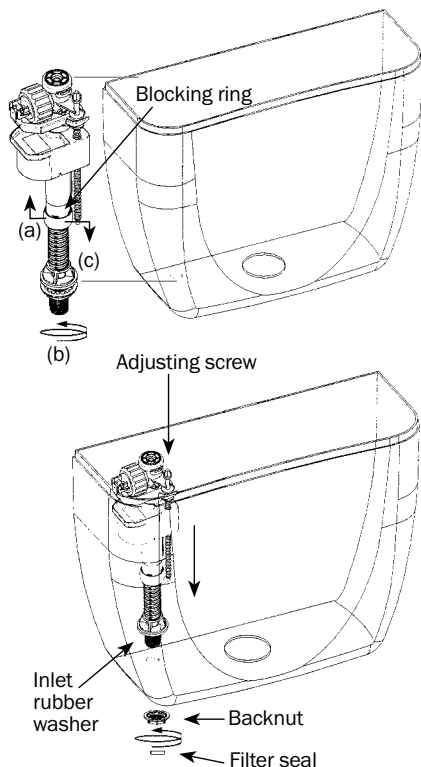
WARNINGS:

- 1 - Do not overtight in any case.
- 2 - Do not use any sealing paste and/or compound in any case
- 3 - Do not use connector handling the internal part of the inlet valve.

SIAMP will be not responsible in case these warnings are not respected.

An approved double check valve or some other no less effective backflow prevention device shall be fitted at the point of connection(s) between the supply and the fitting.

COMPACT 99B with telescopic tube



- ❶ Adjust telescopic tube
 - (a) raise the grey blocking ring
 - (b) screw or unscrew the graduated tube in way so that the inlet top not exceed the top of the tank
 - (c) position back the grey ring
- ❷ Place inlet valve through inlet hole with inlet rubber washer inside the cistern
- ❸ Secure with backnut
- ❹ Connect the supply
- ❺ Adjust water level with grey adjusting screw.

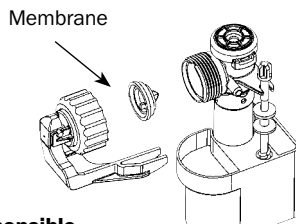
N.B. Ensure tightness of connection to cistern with filter gasket.

WARNINGS:

- 1 - Do not overtight in any case.
- 2 - Do not use any sealing paste and/or compound in any case
- 3 - Do not use connector handling the internal part of the inlet valve.

SIAMP will be not responsible in case these warnings are not respected.

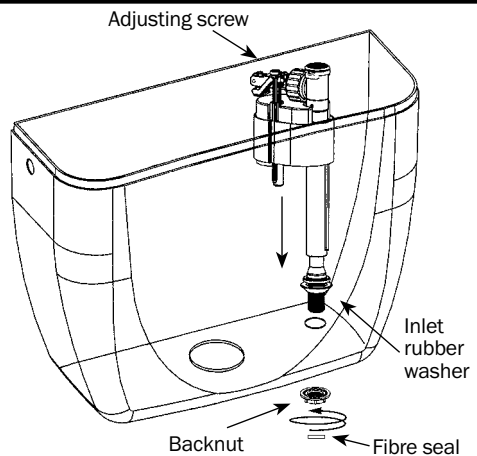
MAINTENANCE



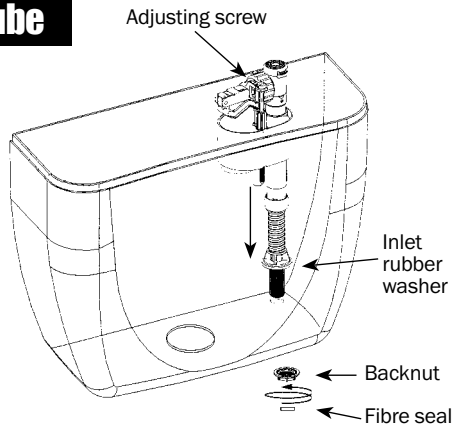
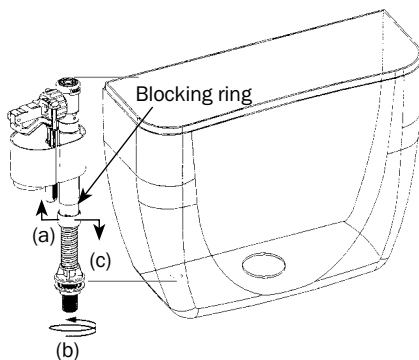
HANDY 93B

- ❶ Place inlet valve through inlet hole with inlet rubber washer inside the cistern
- ❷ Secure with backnut
- ❸ Connect the supply
- ❹ Adjust water level with grey adjusting screw.

N.B. : Make connecting tightness with fibre seal other than any corrosive joint compound



HANDY 93B with telescopic tube



- ❶ Adjust telescopic tube (a) raise the grey blocking ring, (b) screw or unscrew the graduated tube in way so that the inlet top not exceed the top of the tank, (c) position back the grey ring
- ❷ Place inlet valve through inlet hole with inlet rubber washer inside the cistern
- ❸ Secure with backnut
- ❹ Connect the supply
- ❺ Adjust water level with grey adjusting screw.

N.B. : Make connecting tightness with fibre seal other than any corrosive joint compound

For all inlet valves : manually screw the backnut until it is in contact with the ceramic. If necessary give an extra quarter turn (maximum).

N.B.: Excessive tightening can damage the valve and would not be covered by the guarantee. Ensure tightness of connection to cistern with filter gasket.

SIAMP will be not responsible in case these warnings are not respected.

N.B.: In the tank, do not use any anti limescale products or chlorine based products which could damage the mechanism and would not be covered by the guarantee.